

FULL FLOOR FOR LEASE

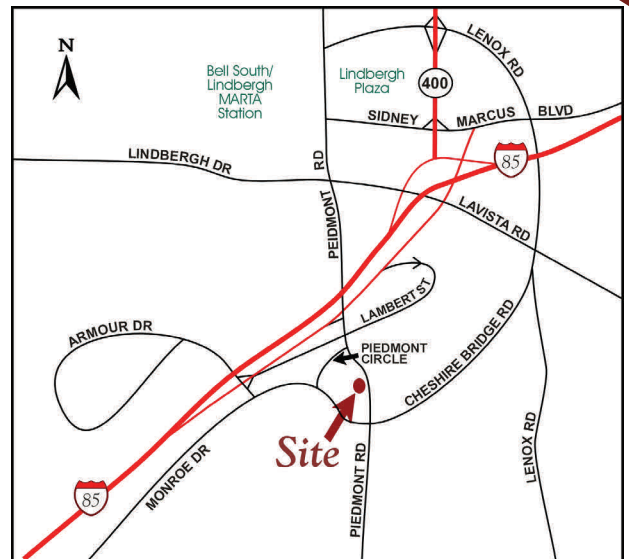
10,000 SF in Bank Owned Building



1924 Piedmont Rd NE, Atlanta, GA 30324

10,000 RSF 2ND FLOOR SPACE
LEASE RATE: \$12.00/SF MODIFIED GROSS

- Below Market Rate
- Class A Office Finishes
- Building Signage Available
- Elevator / Handicap Accessible
- Strategically Located Between Buckhead and Midtown - Seconds to I-85
- Easy Accessibility Via Existing Curb Cuts on Piedmont Road and Piedmont Circle



Eric W. Carlton, LEED, A.P.
404.869.2604
eric@joelandgranot.com

Alan Joel, CCIM
404.869.2602
alan@joelandgranot.com

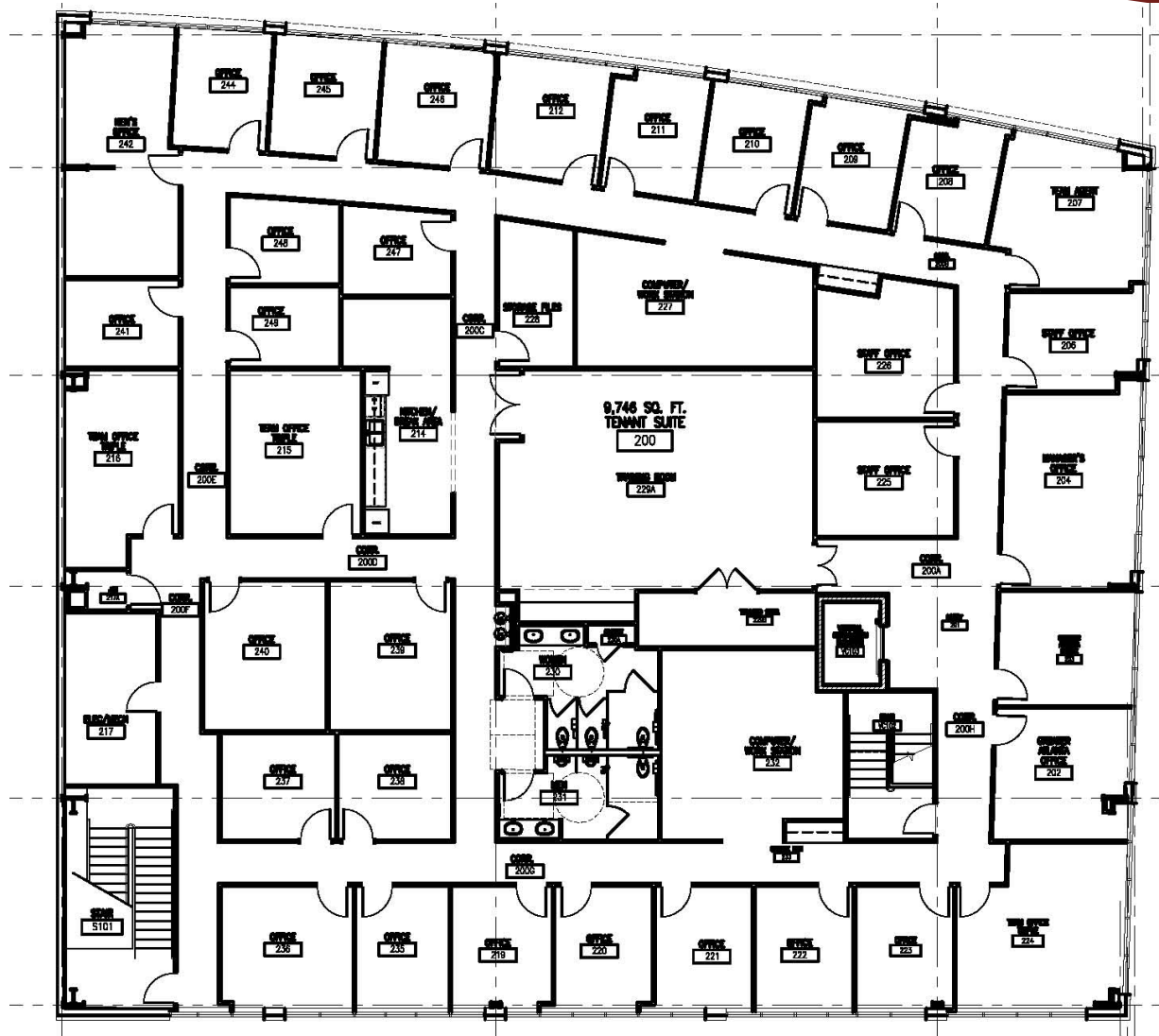
For complete details, please visit: www.joelandgranot.com



962 Howell Mill Road, Atlanta, GA 30318

The information was obtained from sources we assume are reliable. We do not doubt its accuracy, however we do not guarantee it. No liability is assumed for errors and omissions. Information is subject to changes and withdrawal without notice.

1924 Piedmont Road Floor Plan



2nd Floor